

# Armadillo Literary Gazette

A Publication of **Lone Star Mensa**  
Volume XLI  
Number 4, April 2014



Editor: **Rose M. Berkowitz**  
Managing Editor: **Don Drumtra**  
Publisher: **Board of Officers**

## EDITOR'S CHOICE

*Submitted By Rose Berkowitz*

I'd like to welcome our new Board of Officers, and wish them all the best. I'd also like to say farewell to our previous Board members and thank them for their service. Lone Star Mensa couldn't function without you!

Our new President, Geri Neemidge, presents her first column on page 2. She has some great ideas for our group. Be sure to check them out and let her know what you think.

I'm sorry to report that Victor Albanese has passed away. I'm sure we'll all miss his lively and challenging "Out Of My Mind" opinion pieces that he provided quarterly for this newsletter.

Is there anyone out there who'd like to contribute a regular column to this newsletter? If you're so inclined, please get in touch with me so we can work out the details.

I'm always happy to hear from our members. You can send in comments/reactions to newsletter items, ideas, poetry, essays, or whatever else you'd like to contribute. If you tried a recipe we published, tell us how you liked it. No particular word limit, but emailed submissions are appreciated. Send them to [editor@lsm.us.mensa.org](mailto:editor@lsm.us.mensa.org).

## LOCAL GROUP NEWSLETTERS

*Submitted by [HowardP@americanmensa.org](mailto:HowardP@americanmensa.org)*

Have you ever wanted to read the newsletters of Local Groups outside of your own? Perhaps it's one from an area where you once lived or a region you're planning to visit. Maybe it's one produced by the Local Group where your best friend belongs.

American Mensa's newest web service allows you to subscribe to any of the Local Group newsletters that are uploaded to our site. By subscribing to one or all (if you dare), you'll receive an email notification any time a newsletter you've subscribed to is uploaded to our website.

To access this great new benefit:

- Visit <http://www.us.mensa.org/profile> and select Group Newsletter Subscriptions from the left menu.
- Select the newsletter(s) you would like to view, scroll to the bottom of the list, and then click Save Subscriptions.
- When those newsletters are uploaded to the AML website, you will be notified that they are available.

This service will help bridge the miles for members as well as help members keep up with the activities of friends and colleagues across the country.

Please note that the subscriptions are electronic-only notifications that the PDFs are available and that the email notice will be sent to the address we have for you on your membership record.

Happy reading!

## GERI'S GRAB BAG

Submitted by Geri Neemidge, President



Hello Friends

I'm Geri and, having won a place on the board, I have been elected by the board to be president for the next year - April 2014 - March 2015. A few of you know me, if only by reputation, but a large number of you do not. Did you know Lone Star Mensa has 639 members right now? We are really a large group! I find that somewhat surprising because we meet and interact with so few—even virtually. We have so few things in common: some are parents, some are cat lovers, some are engineers. Some love poodles, parties, popcorn and puns. Some love role play, reading, running, and rum. The thing I find most interesting about Mensa is that such a large group of people with such an odd thing in common can get along so well. There is something about a group of Mensans that cannot be measured. Some shared life experience, some ability to relax in each other's company, some inside joke, the ability to get each other's jokes, to use your full vocabulary, to ask any question, to talk

deep into the night and into the next morning. I LOVE that!

Mensa is a social club and I would like to see our club become more social. I know people are busy and have other obligations and certainly other demands on their time—but the magic really happens when we interact. I hope I can show you all the magic. I hope that you can all feel that relief that you can be your true self and will not be judged as a show off or teacher's pet, or stuck up. I plan to schedule more events on our calendar—more opportunities to meet in person. I hope you will as well. Share your interests: Knitting? Crafting? Cooking? Demolition? Plan a get together, a hike, a meal, meet for coffee or a movie. We are working to get a robust members-only section on our web site where we can plan events on the fly (without the publishing deadline our newsletter requires). We have a Facebook page <<https://www.facebook.com/groups/86611987434/>> where we can already do that, as well as an announcement email list <[lsm-announce@lists.us.mensa.org](mailto:lsm-announce@lists.us.mensa.org)>.

Also, in hopes of simplifying our schedule and luring more people to meetings, we are planning to move our board meeting, monthly meeting, and games night to the same day and location. It will take some time (and we need to make arrangements) but the plan is to begin with the board meeting around 4:00 pm on Saturday, continue with the monthly meeting (where we will generally feature a guest speaker), then have games night, dinner, and social time afterward. I am hoping that by concentrating the events on a Saturday evening that members will be able to set aside that block of time once a month to attend.

I hope we'll have a great year—and that we do get to spend more of it together.



Submitted by Roger Durham, Region 6 RVC



Sadly, if history is any guide, this will be my last chance to communicate with about 900 of you. That is the average number of Region 6 Mensans who will not renew their memberships, and hence will be dropped from our mailing lists after this month. We haven't met most of you, but nonetheless you will be missed. We sincerely regret that Mensa has not fulfilled your expectations, whatever they might have been, and we hope that, upon reflection, you will give us another try. Unlike many other organizations, we rely on our members to provide a diversity of activities, so if you didn't find what you were looking for, please consider that others may have been looking for the same thing. It's possible

that all it would take to find satisfaction in Mensa membership is to put a notice in your local newsletter that you are interested in X, and are looking for others with a similar interest. You might meet a whole bunch of interesting new friends!

As I mentioned last month, it's time to make plans to attend both the Houston Regional Gathering in May (<http://gcmensa.org/index.php/synrg/2014-register>), the 2014 Annual Gathering, July 2-6 in Boston ([www.ag.us.mensa.org](http://www.ag.us.mensa.org)), as well as the Austin RG over Labor Day weekend (<http://lonestarg.com/>). I plan to be at all three, and hope to see you there. Also, if you hurry, there's still time to register for this year's Mind Games in Austin April 18-20. This exciting event is held, like the AG, in a different city each year, so this may be your last chance to attend in a nearby location for quite some time. At Mind Games, you and about 300 of your fellow Mensa members will have the chance to play the 60 or so new games submitted by game designers and selected

by a panel of experienced judges each year. To register, go to [www.mindgames.us.mensa.org](http://www.mindgames.us.mensa.org), or call 888-294-8035. This event sells out every year, so act now!

You might be interested to know that by an e-mail ballot at the end of February, the region's Local Secretaries chose three people to serve as our representatives on the national Nominating Committee for the upcoming 2014-15 American Mensa election cycle. The three NomComm members chosen were Patricia Williams of Gulf Coast Mensa (Houston), David McCallister of Mensa 76 (Fort Worth), and Sherrie Reimers of South Texas Mensa (San Antonio). My thanks to all three for accepting this substantial responsibility.

Finally, as always, please remember that if you have any questions, comments, or concerns, you can reach me at [rvc6@us.mensa.org](mailto:rvc6@us.mensa.org) or by snail mail at 9920 Ridgehaven Drive, Dallas, TX 75238

A rectangular advertisement for BlueAwningBooks. The top part features a black background with the company name "BlueAwningBooks" in white, with the tagline "RARE, OUT-OF-PRINT & GENTLY USED" below it. To the left of the text are four vertical white bars of varying heights. Below this is the slogan "A PLACE FOR PEOPLE WHO THINK" in large, bold, black letters. At the bottom, the address "6009 Burnet Road, Austin TX 78757" and phone number "512-275-6430" are listed, along with the website "blueawningbooks.com".

**BlueAwningBooks**  
RARE, OUT-OF-PRINT & GENTLY USED

**A PLACE FOR  
PEOPLE WHO THINK**

6009 Burnet Road, Austin TX 78757  
512-275-6430 [blueawningbooks.com](http://blueawningbooks.com)

## MARCH BOARD MINUTES

Submitted by John Neemidge, Acting Scribe

The March regular meeting of the Lone Star Mensa board of officers convened at 7:20 PM, Thursday, March 6, 2013 at Carver Public Library, Rooms 2-3, 1161 Angelina, Austin, TX. Attending were **Andrew Badgely, Don Drumtra, Ron Edelstein, Geri Neemidge, John Neemidge, Aaron Rabushka, Leslie Stevenson, Doug Williams** and **Douglas Yee**. The board adopted the agenda and the minutes of the February regular board meeting as printed in the March *Armadillo Literary Gazette*, and adopted the minutes of the February special board meeting as printed, except for noting that **Doug Williams** also attended the meeting. The *Gazette* is available on the LSM Website and paper copies are available on request.

The board received the following officer reports and took the following actions:

- **LocSec:** No report given.
- Treasurer: No report given.
- **ComComm:** Sean Medley has reported that he is unable to take over the ComComm as expected; we will begin searching for another ComComm chair. The Board discussed advertising in the ALG; the Post Office is checking us for it. We are unlikely to run afoul of the restrictions, but we must keep advertising below 10% or we risk significant trouble. Advertisements for gatherings which include hotel information are considered advertising.
- **EdComm:** No updates.
- **MemComm:** Fixed mail.
- **SymComm:** Our speaker will be Dr. Michael Brenner from UT. We are working on finding speakers for future monthly meetings. Several ideas were discussed.
- **Lone Star RG 2014 Committee:** RG is moving along; contract still in progress. Draft website is in progress.
- **Website Working Group:** Our website designer has moved out of the group. We are still hoping for that site to become our website, but she is currently very busy and has not been able to devote the time to it that was planned. Various options for moving forward were discussed.
- **Mind Games Committee:** We have 309 room nights reserved as of Mar 6 and 224 Mind Games registrations as of Mar 6, 2014. Both numbers are at expectations.
- **Nomination and Election Committees:** Elections are done. No challenges were received by the deadline so the election results are final. The records have been turned over to the Records Manager, and the committees, having completed their work, were automatically dismissed. These committees successfully managed the first full election complete with balloting since the current bylaws were adopted. Their work will set the standard for future elections. The board praised the Chairman, Linda Edelstein, and the committee members, Janet Kres, and Patsy Graham, for their ground breaking work.

New Business:

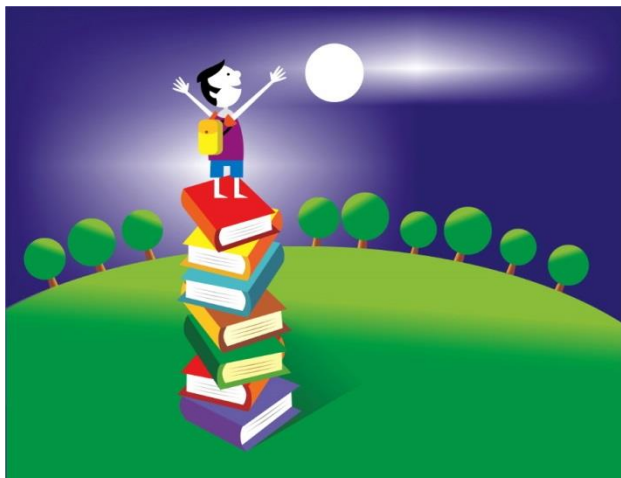
- Ryan Robinson, from Austin's planning department has volunteered to speak at an upcoming meeting.
- We have a teenage Mensa Member who wants to do volunteer work within the chapter over the summer. There are several possibilities, but we are not sure if Mensa would even truly count for what he needs. We will work with him to see what the options are.
- The Board discussed our participation in Mensa Testing Day.
- The Board discussed the Leadership Development Workshop to be held at the AG this summer in Boston.
- The Board passed a motion to commend the 2013-4 standing committees and coordinators for their support of LSM.
- The board provided advice for the incoming President on potential chairs of the standing committees (Com, Ed, Mem, Sym). The main advice was to consider the two candidates for the Board who were not elected. Andrew Badgely was present and may be interested.
- The Board provided advice for the incoming President on independent and special officers for 2014-5. Current officers serve until removed from office; however, Ron Edelstein is not permitted by the bylaws to continue as Ombudsman or Arbiter.
- The Board discussed possible goals for the 2014-5 board.
- The Board discussed dates, times, and locations for LSM meetings for 2014-5. Members expressed a great deal of dissatisfaction with Thursday nights and with the Carver Branch location on weeknights. The Board discussed having a combined board meeting, monthly meeting, and games night on the same night. The plan adopted is for a Saturday afternoon Board meeting, followed by the speaker meeting, followed by Games Night. There will be further discussion in April; our current plan is to transition to the new schedule in May, as Mind Games is in April on the same weekend.
- The Board very briefly discussed the budget for 2014-5. No action was taken
- There was a brief discussion of testing opportunities for blind potential members.

Announcements:

- The next monthly Board meeting was scheduled for 6 - 8 PM, Saturday, Apr 5 and Saturday, May 17 at Café Express. The May meeting time, date, and location is tentative.
- The next regular Monthly Member meetings are scheduled for 6:45-8:15 PM, Monday, Mar 10, and Monday, Apr 14, at the Carver Branch Library.

The meeting adjourned at 8:30 PM.

Reviewed by Lynn Herrick



Katy Crossing Press, LLC  
Georgetown, TX

<http://www.katycrossingpress.com>

That was some story about *Having the Ladies to Lunch* that our own Jane Thompson shared with us at one of our Member Meetings last year! Right, folks? Well, Jane has a new book out: *Flying Buttresses, A Novel of Bipolar Disorder*. It's her third.

Buttressing one another, like the arcs-boutants on a Gothic church, are six intriguing, unique individuals worth caring about—all bipolar, all composites of real people with colorful histories and personalities, all brought together in an unofficial support group. You'll be entertained while you're learning a lot about bipolar disorder. For instance:

It's usually hereditary—a chemical roller coaster of major mood swings. An individual's recurring up and down cycles can be as short as several weeks or as long as several years. And it may take years for doctors to find the right medication(s) for that

individual. In the meantime, that person is at the mercy of their moods.

It makes intelligent people lose jobs, apartments, friends, spouses, and child and/or pet custody. It wrecks lives and cars.

It often correlates with genius or high creativity. The long list of distinguished bipolars includes Winston Churchill, Vincent Van Gogh, Vivien Leigh and Patty Duke. (I wonder if Mensa has a higher percentage of bipolars than the rest of the world out there.)

A fourth of all bipolars attempt suicide at some time, and 16% succeed. But more dangerous than the depression are the reckless things people do during the manic "high."

Natural remedies that are said to control bipolar disorder don't—but not all pharmaceutical remedies are trustworthy, either. One greedy drug firm actually marketed a product as an effective bipolar remedy when they knew it wasn't, just because there was such an eager market among hopeful bipolars.

The social stigma adds to the physical hell. Even if you can control your moods with meds and excel at your job, some bosses will fire you just for admitting you have this condition. When Rep. Jesse Jackson, Jr. came out as bipolar, frightened people begged him to resign from Congress. One even said he was afraid Rep. Jackson might "freak out" on the House floor and "start raping women."

Strangely, nearly all bipolars are hooked on Diet Coke.

Read this book and find out many other fascinating facts about this much-maligned malady—and how people keep it from ruining their lives.

#### AFI—100 GREATEST MOVIE QUOTES

Submitted by Rose M. Berkowitz



These video clips bring back some wonderful memories! (Note how many are from "Casablanca.")

[http://www.flixxy.com/100-movie-quotes-american-film-institute.htm?utm\\_source=nl#.UcBYhJm3nl.email](http://www.flixxy.com/100-movie-quotes-american-film-institute.htm?utm_source=nl#.UcBYhJm3nl.email)



## FOUNDING FATHERS ON RELIGION

If our Founding Fathers were all Christians, why did they say this?

- "If I could conceive that the general government might ever be so administered as to render the liberty of conscience insecure, I beg you will be persuaded, that no one would be more zealous than myself to establish effectual barriers against the horrors of spiritual tyranny, and every species of religious persecution." - George Washington, letter to the United Baptist Chamber of Virginia (1789)
- Question with boldness even the existence of a God; because, if there be one, he must more approve of the homage of reason, than that of blindfolded fear." - Thomas Jefferson, letter to Peter Carr (1787)
- "In regard to religion, mutual toleration in the different professions thereof is what all good and candid minds in all ages have ever practiced, and both by precept and example inculcated on mankind." Samuel Adams, The Rights of the Colonists (1771)
- "Persecution is not an original feature in any religion; but it is always the strongly marked feature of all religions established by law. Take away the law-establishment, and every religion re-assumes its original benignity." - Thomas Paine, The Rights of Man (1791)
- "Congress has no power to make any religious establishments." - Roger Sherman, Congress (1789)
- "The way to see by faith is to shut the eye of reason." - Benjamin Franklin, Poor Richard's Almanack (1758)
- "I contemplate with sovereign reverence that act of the whole American people build a wall of separation between Church & State." - Thomas Jefferson, letter to the Danbury Baptists (1802)
- "To argue with a man who has renounced the use of reason is like administering medicine to the dead." - Thomas Paine, The American Crisis No. V (1776)
- "Our civil rights have no dependence on our religious opinions, any more than our opinions in physics or geometry." - Thomas Jefferson, A Bill for Establishing Religious Freedom (1779)
- "Christian establishments tend to great ignorance and corruption, all of which facilitate the execution of mischievous projects." - James Madison, letter to William Bradford, Jr. (1774)
- "There is nothing which can better deserve our patronage than the promotion of science and literature. Knowledge is in every country the surest basis of public happiness." - George Washington, address to Congress (1790)
- "During almost fifteen centuries has the legal establishment of Christianity been on trial. What have been its fruits? More or less, in all places, pride and indolence in the clergy; ignorance and servility in the laity; in both, superstition, bigotry and persecution." - James Madison, General Assembly of the Commonwealth of Virginia (1785)

## FIRST DIRECT EVIDENCE OF COSMIC INFLATION

*From ScienceDaily Newsletter*

Almost 14 billion years ago, the universe we inhabit burst into existence in an extraordinary event that initiated the Big Bang. In the first fleeting fraction of a second, the universe expanded exponentially, stretching far beyond the view of our best telescopes. All this, of course, was just theory. Researchers now announce the first direct evidence for this cosmic inflation. Their data also represent the first images of gravitational waves, or ripples in space-time. These waves have been described as the "first tremors of the Big Bang." Finally, the data confirm a deep connection between quantum mechanics and general relativity; <http://bit.ly/ll6Nkng>

## GIFTED YOUTH NEWS AND NOTES

Submitted by Lisa Van Gemert, Gifted Youth Specialist [llisav@americanmensa.org](mailto:llisav@americanmensa.org) 817.607.5578

### Happenings & Celebrations:

- 2nd: Peanut Butter and Jelly Day
- 17th: High Five Day
- 20th: Easter
- 23rd: Shakespeare's Birthday

April is National Humor Month. Try out a new joke on a friend. You can find some kid-friendly jokes here <http://bit.ly/kids-jokes>

### Resources:

You can grill your peanut butter and jelly sandwich on Peanut Butter and Jelly Day. It works best if you do it on low heat. Try it!

Whether or not you celebrate Easter, dyeing eggs is fun! Here are some tips:

To dye eggs, combine: 1 / 2 cups boiling water, 1 tsp, white vinegar. 10 drops food coloring .

Dip hard boiled eggs in the dye for 3 – 5 minutes. The longer you leave in the eggs, the deeper the color. (I see an experiment coming...)

### Variations:

- Hold an egg part way in and only color half of the egg.
- Add 1 tablespoon olive oil to the mixture and stir. Put in the egg and roll it around. When you remove the egg from the mixture, dry it off gently with a paper towel and lay it on wax paper to dry. You can put it in another color after its dry if you like.
- After a dyed egg is dry, cover it with a thin layer of glue and then sprinkle glitter on it. You can put tape or stickers on sections to prevent glue from sticking there and create interesting patterns.
- Instead of using food coloring drops, try dying the eggs with natural colors from cranberry

juice, beets, paprika, grape juice concentrate, spinach, tea or coffee.

### Triviality:

April has come down in the world. On the earliest Roman calendar, it was the second month, not the fourth as it is now. King Numa Pompilius added Ianuarius and Februarius around 700 BC (March used to be first). It also used to have only 29 days. The extra day was added during the Julian calendar reform in the mid-40s BC.

### Benefit Highlight:

BrainWorx shares a series of daily trivia questions geared specifically toward gifted youth. The questions are shared via Twitter @MensaGT at 10 a.m. Central time each day, and the answer to the previous day's question is shared at 9 a.m. Central time.

Every day has a different topic:

- Math & Science Mondays feature mathematics, history of math, science and engineering feats and marvels.
- Tuned-in Tuesdays quiz gifted youth about music, music history, radio, musicals, television and movies.
- Worldly Wednesdays are all about geography, geology, politics and history.
- Thursday's Twin Topics of language and literature will challenge the brightest kids.
- Fun Fridays cover everything from general topics to space, from the strange and wacky to unusual fun facts.

You can follow @MensaGT at

<https://twitter.com/MensaGT>.

get resources: [www.pinterest.com/brightkids](http://www.pinterest.com/brightkids)

find more: [www.mensaforkids.org](http://www.mensaforkids.org)

## GIFTED YOUTH IN THE NEWS

Submitted by Victoria Liguez | Marketing Manager | American Mensa

We have recently received increased media attention regarding young members. Here are just a few of the links to the media coverage regarding a young member:

- <http://foxnewsinsider.com/2014/02/17/meet-alexis-martin-arizonas-youngest-mensa-member>

- <http://www.cnn.com/2014/02/19/health/iq-score-meaning/index.html>

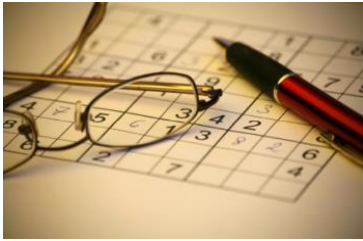
- <http://abclocal.go.com/ktrk/story?id=9435893&section=news%2fbizarre>

## YOUR SUDOKU PUZZLE

### Extreme Sudoku

<http://www.sudoku.org.uk/>

By Douglas Yee



				7			1
	1			9		8	
9		6		3			5
5			9				6
	3			1			4
4				6			2
1			6			2	4
	6		3				9
7			5				

Each Sudoku has a unique solution that can be reached logically without guessing. Enter digits from 1 to 9 into the blank spaces. Every row must contain one of each digit. So must every column, and every 3x3 square.

## 2014 COLLOQUIUM NEWS

Submitted by [charlesb@americanmensa.org](mailto:charlesb@americanmensa.org)

The Mensa Education & Research Foundation is excited to announce that Rhonda Roby, a leading forensic scientist and researcher in the mitochondrial genome, will speak at the 2014 Colloquium: Crime Scene Intelligence, scheduled July 1 in Boston.

Dr. Roby has worked with Armed Forces Institute of Pathology's Department of Defense DNA Registry, Armed Forces DNA Identification Laboratory, contributing to the development of efforts to use Mitochondrial DNA (mtDNA) sequencing for identifying remains of missing service members.

She led the mtDNA efforts to assist the City of New York Office of Chief Medical Examiner in the identifications of the remains of decedents in response to the terrorists' attack on the World Trade Center on Sept. 11, 2001. For this case, Dr. Roby was the director of the mtDNA sequencing program at Celera, which established a high throughput forensic sequencing facility for remains identification of 9/11 victims. In 2006, she was asked by the Chilean government to act as the lead forensic geneticist and conduct an audit of the identifications of victims from Gen. Augusto Pinochet's direction for their tortures and murders.

From fingerprints to forensic psychology, from computers to crime scenes and beyond, Colloquium 2014: Crime Scene Intelligence will fully explore the world of forensic science. Rhonda Roby is a wonderful addition to this year's Colloquium, which will be an exciting chance to interact with other bright minds on the current status of forensic science.

Get more information and register today at <http://www.colloquium.us.mensa.org>.



**HAPPY**

**EASTER!**



## LEADERSHIP SUMMIT

Submitted by [www.mensanotices@americanmensa.org](mailto:www.mensanotices@americanmensa.org)

It's time to register for the 2014 Leadership Summit: Collaboration in Action!

Scheduled July 2 at the start of the Annual Gathering in Boston, this year's Leadership Summit will not be limited to sitting LocSecs or Assistant LocSecs. This year, Local Groups should select their delegate among local officers who would benefit from this training, which is designed for those who are on a leadership track that will include LocSec or Assistant LocSec position.

Full details on the programming are available at [www.us.mensa.org/leadershipsummit](http://www.us.mensa.org/leadershipsummit), but programs will include:

- **Marketing Mensa Style** will unravel the mystery behind how the Local Group, Development Committee and National Office Marketing staff work together to implement promotions and raise awareness about Mensa.
- **Speaking Without Saying a Word** will look at ways of improving communication tools.
- **Navigating the National Office Resources** will review tools available to Local Groups to improve service to members.

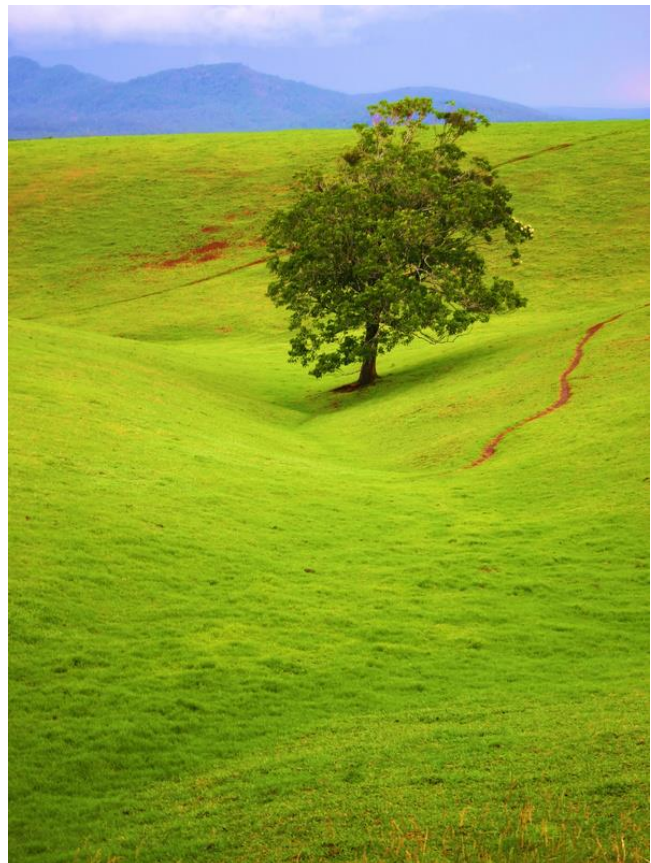
Get more information and register today at [www.us.mensa.org/leadershipsummit](http://www.us.mensa.org/leadershipsummit).

## POETRY CORNER

### *BETWEEN TWO RIVERS*

*Even my pain is beautiful.  
All of it.  
Even the desolation of a great desert,  
A slag heap,  
A mountain pulled up and pulled down,  
A pile of bodies in a mass grave in a field.  
Don't look away.  
A little bird sings sweetly in a little tree,  
Waiting for spring,  
While a storm is on its way.  
Who knows what tomorrow will bring?  
But still beauty fills the air,  
And always will.*

© Rose M. Berkowitz, April 14, 2007



## LSM MEMBER NEWS

Compiled by Don Drumtra, Records Manager, as of 02/28/14

### HAPPY APRIL BIRTHDAYS\*

2 Bruce Wayne Jean  
3 Mark Summers  
5 Sean T Taylor  
6 John Morey  
7 Alejandro A Loayza  
9 Sarah Graham  
9 Timothy S Rupert  
9 Diana M Wilbur  
11 Michael Withers  
13 Amanda Booth  
14 Michael L Drapkin  
14 Johnnie Ray Vaughn  
15 Janet Stineman Kres  
15 James L McShan  
15 Tomas Medina  
16 Christopher M Jackson  
16 Brian Slone  
17 Brian Bloch  
17 David T Silvey  
18 David J Burgett  
18 Patricia Carolyn Dicuffa  
20 Andrew Badgley  
21 Rita Barker Christie  
21 Susan Modelle Gibson  
22 John Leslie Neemidge  
22 George Nincehelter  
23 Nanette South Clark  
23 Robin D Green  
23 Nancy Hester  
23 Andrew M Rooke  
23 Stephanie Stoebe  
24 Larry Coy  
24 Emma W Hill  
24 Patricia B McCormick



### HAPPY APRIL BIRTHDAYS

25 Jonathan A Blair  
26 Wes Davenport  
27 Dr Dan B Dydek  
28 David James White  
29 Ted Alexander

### NEW MEMBERS—WELCOME!

Amanda Booth  
Keena Dietz  
Tim Harrington  
Brian Selman  
Jose Vazquez Canteli

### JUST MOVED IN—HI NEIGHBOR!

Dewayne J Buratti  
Patrick I Henry  
Robert Max Ruhge

### WELCOME BACK--MISSED YOU!

William Allan Besselink  
Harrison Jones  
Natalie Jones  
Cristina E LaFuente  
Brian Orrick  
Matthew T Scarborough

### GOODBYE—MOVING AWAY

Peggy Bills  
Charles A Espey

*\* Note: We can't acknowledge your birthday if you've restricted that information in your member profile. To check your member profile, log in to the AML website.*

---

## HAPPY ANNIVERSARY!

---

### MEMBER FOR 30 YEARS

Jane Thompson

### MEMBER FOR 10 YEARS

Allison T Egger  
Dr John Edison Rockwell

### MEMBER FOR 5 YEARS

Hunter Gasaway  
Judy L Mittag  
Johnnie Ray Vaughn



### MEMBER FOR 1 YEAR

Patricia Kay Bowers  
Patrick Buchanan  
Stephen Shannon Janes  
Caroline Kim  
Henry J Kubicek  
Ron W Murray  
Michael Gregory Neff  
George Nincehelter  
Michael Seay

## 2014 CULTURE QUEST®

Submitted by Charles Brown, [charlesb@americanmensa.org](mailto:charlesb@americanmensa.org)

Set your calendars and round up your trivia buffs – the 2014 Culture Quest® competition will take place on Sunday, April 27.

CultureQuest draws together teams from across the United States and Canada to compete for cash prizes and cultural literacy bragging rights. There are two divisions:

- Classic is open to all members regardless of age. Each team member must be a dues-paid Mensan (U.S. or Canada) for the 2014-15 membership year before April 1, 2014.
- For the youth division, entrants must have been born after April 27, 1996. Only the youth division team captain must be a current Mensa member.

To register, visit <http://www.us.mensa.org/culturequest> and select “CultureQuest Registration” from the left menu. Downloadable rules and registration forms are also available on that page. Online registration can be made until 11:59 p.m., Central Time, on Monday, March 31. Team changes must be received via email by that date as well.

For more information, contact the Culture Quest Chair. For changes to your registration, contact [VolunteerPrograms@americanmensa.org](mailto:VolunteerPrograms@americanmensa.org).



Submitted by John and Geri Neemidge



Mind Games® is in Region 6 this year—for the first time in 11 years! It begins April 18th!

I know we've been talking about this for months –but now it's here! If you are reading this before April 6<sup>th</sup> you may still be able to register. Check <http://www.mindgames.us.mensa.org/> if you want to sign up to judge the games.

If playing games for two straight days does not appeal to you, you can still come on over and give us a hand. We will be at the Austin Airport Hilton from Thursday evening April 17<sup>th</sup> through Sunday morning April 20<sup>th</sup>. We need people to help out with:

- Decorating
- In hospitality (putting out snacks, keeping things tidy)
- Baking yummy cookies
- Tidying up the game room
- Keeping an eye on the ballot box
- Running errands
- Etc.

Please let me know if you would like to help out ([mg2014@neemidge.net](mailto:mg2014@neemidge.net)). You do not need to be there all weekend, an hour or two will be appreciated.



## MONTHLY MEETING REPORT

*Submitted by Ron Edelstein*

The LSM General Meeting was held on Monday, 10 March. The guest speaker was Dr. Michael Brenner. The announced subject was "Human Rights, Women's Rights and U.S. Foreign Policy". Over the course of the discussion the subject drifted into the history of U.S. foreign policy and military interventions and wars from the founding of the Republic to the present. There were different viewpoints on the subjects and a lively discussion ensued. All in all, one of the most engaging meetings in quite a while. But tempers settled down at the end and all departed peaceably.

## WEATHER AND ITS EFFECTS

*Submitted by Ron Edelstein (going around the internet)*

An annotated thermometer (degrees Fahrenheit):

- @ 60 - Californians put on sweaters (if they can find one in their wardrobe).
- @ 50 - Miami residents turn on the heat.
- @ 40 - You can see your breath, Californians shiver uncontrollably, Minnesotans go swimming.
- @ 35 - Italian cars don't start.
- @ 32 - Water freezes .
- @ 30 - You plan your vacation to Australia, Minnesotans put on T-shirts, politicians begin to worry about the homeless, British cars don't start.
- @ 25 - Boston water freezes, Californians weep pitifully, Minnesotans eat ice cream, Canadians go swimming.
- @ 20 - You can hear your breath, politicians begin to talk about the homeless, New York City water freezes, Miami residents plan vacation further South.
- @15 - French cars don't start, you plan a vacation in Mexico, cat insists on sleeping in your bed with you.
- @ 10 - Too cold to ski (in California), you need jumper cables to get the car going.
- @ 5 - You plan your vacation in Houston, Japanese cars don't start.
- @ 0 - Alaskans put on T-shirts, too cold to skate (in California) .
- @ -10 - American cars don't start, eyes freeze shut when you blink.
- @ -15 - You can cut your breath with a knife and use it to build an igloo, Arkansans stick tongue on metal objects, Miami residents cease to exist.
- @ -20 - Cat insists on sleeping in your pajamas with you, politicians actually do something about the homeless, Minnesotans shovel snow off roof, German cars don't start.
- @ -25 - Too cold to think, you need jumper cables to get the driver going.
- @ -30 - You plan a two-week hot bath, the Mighty Monongahela freezes, Swedish cars don't start.
- @ -40 -Californians disappear, Minnesotans button top button, Canadians put on sweaters and walk to work, your car helps you plan your trip South.
- @ -50 - Congressional hot air freeze, Alaskans close the bathroom window.
- @ -80 - Hell freezes over, polar bears move south.
- @ -90 - Politicians put their hands in their own pockets.



## LONE STAR MENSA CONTACTS BY FUNCTION

Compiled by Don Drumtra, Officer Coordinator, as of 02/28/14

### NEWSLETTER

Editor	<a href="mailto:editor@lsm.us.mensa.org">editor@lsm.us.mensa.org</a>	Rose Berkowitz	512-467-4871
Emailing	<a href="mailto:epostmaster@lsm.us.mensa.org">epostmaster@lsm.us.mensa.org</a>	Linda Edelstein	512-491-9881
Snail mailing	<a href="mailto:postmaster@lsm.us.mensa.org">postmaster@lsm.us.mensa.org</a>	Don Drumtra*	512-291-0315
Online	<a href="mailto:records@lsm.us.mensa.org">records@lsm.us.mensa.org</a>	Don Drumtra	512-291-0315
Calendar	<a href="mailto:calendar@lsm.us.mensa.org">calendar@lsm.us.mensa.org</a>	Rose Berkowitz	512-467-4871
Publicity	<a href="mailto:publicity@lsm.us.mensa.org">publicity@lsm.us.mensa.org</a>	Paul Anderson	512-259-7824
Advertising		Vacant	
Photographer		Vacant	
Managing Editor	<a href="mailto:editor@lsm.us.mensa.org">editor@lsm.us.mensa.org</a>	Don Drumtra	512-291-0315
Publisher	<a href="mailto:recVice President/Secretary@lsm.us.mensa.org">recVice President/Secretary@lsm.us.mensa.org</a>	Board of Officers	512-291-0361

### ON LINE

Website Design	<a href="mailto:mensapats@att.net">mensapats@att.net</a>	Patsy Graham	512-380-0141
Website Maintenance	<a href="mailto:webmaster@lsm.us.mensa.org">webmaster@lsm.us.mensa.org</a>	Douglas Yee	512-288-9172
LSM Officers, contacts	<a href="mailto:records@lsm.us.mensa.org">records@lsm.us.mensa.org</a>	Don Drumtra	512-291-0315
Board Meetings	<a href="mailto:leslielstevenson@gmail.com">leslielstevenson@gmail.com</a>	Leslie Stevenson	979-599-3555
Operating standards	<a href="mailto:records@lsm.us.mensa.org">records@lsm.us.mensa.org</a>	Don Drumtra	512-291-0315
Email Lists	<a href="mailto:emaillists@lsm.us.mensa.org">emaillists@lsm.us.mensa.org</a>	John Neemidge**	512-310-7863
Facebook	<a href="mailto:facebook@lsm.us.mensa.org">facebook@lsm.us.mensa.org</a>	Geri Neemidge	512-310-7863

### MEMBERSHIP

		Vacant	
New Members	<a href="mailto:mensapats@lsm.us.mensa.org">mensapats@lsm.us.mensa.org</a>	Patsy Graham	512-380-0141
Renewals	<a href="mailto:ravina_n@hotmail.com">ravina_n@hotmail.com</a>	Ravina Nelson	512-795-0739
Testing	<a href="mailto:testing@lsm.us.mensa.org">testing@lsm.us.mensa.org</a>	Johnnie Vaughn**	512-867-5658
Awards		Vacant	
Officers	<a href="mailto:records@lsm.us.mensa.org">records@lsm.us.mensa.org</a>	Don Drumtra	512-291-0315

### EDUCATION

		Vacant	
Gifted Youth Programs	<a href="mailto:giftedchildren@lsm.us.mensa.org">giftedchildren@lsm.us.mensa.org</a>	Michele Vaughan	512-388-5970
Scholarship Chair	<a href="mailto:mgrichards@att.net">mgrichards@att.net</a>	Michael Richards	210- 860-7384
Asst. Scholarship Chair	<a href="mailto:scholarship@lsm.us.mensa.org">scholarship@lsm.us.mensa.org</a>	Claudia Harbert	512-238-0205
Financial Outreach		Vacant	

### EVENTS

Monthly Programs		Vacant	
TGITs	<a href="mailto:drumtra@aol.com">drumtra@aol.com</a>	Don Drumtra**	512-291-0315
Games Night	<a href="mailto:mensapats@lsm.us.mensa.org">mensapats@lsm.us.mensa.org</a>	Patsy Graham	512-380-0141
Chess Night	<a href="mailto:cmvc95@yahoo.com">cmvc95@yahoo.com</a>	Douglas Yee**	512-288-9172
Eclectic Eats	<a href="mailto:arabushka@austin.rr.com">arabushka@austin.rr.com</a>	Aaron Rabushka**	512-280-2807
Gen X/Y Events	<a href="mailto:carla.x.young@gmail.com">carla.x.young@gmail.com</a>	Carla Young	954-465-3498
Area Events Coordinators		Vacant	

<b>2014 RG CO-CHAIRS</b>	<a href="mailto:leslielstevenson@gmail.com">leslielstevenson@gmail.com</a>	Leslie Stevenson	979-599-3555
	<a href="mailto:mostquality@austin.rr.com">mostquality@austin.rr.com</a>	& Johnnie Vaughn	512-867-5658

### OMBUDSMAN

<b>REIMBURSEMENTS</b>	<a href="mailto:treasurer@lsm.us.mensa.org">treasurer@lsm.us.mensa.org</a>	Douglas Yee**	512-288-9172
-----------------------	--	---------------	--------------

### S.I.G.H.T.

<b>EVERYTHING ELSE</b>	<a href="mailto:President@lsm.us.mensa.org">President@lsm.us.mensa.org</a>	Vacant	
		Geri Neemidge**	512-310-7863

\* Experienced members who've worked with the National Office (NO) and the American Mensa Committee (AMC), and can help members navigate both.

\*\* LSM board members: Geri Neemidge, Don Drumtra, Aaron Rabushka, Doug Williams, Ron Edelstein, Leslie Stevenson, Johnnie Vaughn and Douglas Yee.

## APRIL CALENDAR

Compiled by Rose Berkowitz, Calendar Editor

Sun	Mon	Tue	Wed	Thu	Fri	Sat
		1 APRIL FOOL'S DAY	2	3	4	5 Board Meeting
5	7	8	9	10 ALG Due Chess Night TGIT-North	11	12
13	14 Member Meeting	15 Eclectic Eats TAX DAY	16	17 TGIT-South	18 Mind Games	19 Mind Games
20 Mind Games EASTER	21	22	23	24 TGIT-North Seal & Label	25	26
27 Culture Quest®	28	29	30			

See the online calendar ([ism.us.mensa.org/events/calendar.shtml](http://ism.us.mensa.org/events/calendar.shtml)) for the latest additions, cancellations, or changes. Online calendar inputs may be posted at any time. Calendar input for the printed calendar is due by the second Thursday of each month for the following month.

**Board Meeting**  
1<sup>st</sup> Saturday  
Apr 5, 6-8 pm  
Café Express

**ALG/Calendar Deadline**  
2<sup>nd</sup> Thursday  
Apr 10, Midnight  
Submissions due to Editor.



**Chess Night**  
2<sup>nd</sup> Thursday  
Apr 10, 6-8 PM  
Come cross swords with us! We welcome players of any and all skill levels. If you want to learn to play the Royal Game, we can show you how. Observers are welcome, too. Join us for dinner and conversation. Hosted by Douglas Yee ([cmvc95@yahoo.com](mailto:cmvc95@yahoo.com)).

**Thank Goodness It's Thursday (TGIT-North)**  
Apr 10 & 24, 6-8 pm  
Meet us upstairs at the Café for conversation, food and fun. Prospective members welcome

**Member Meeting**  
2<sup>nd</sup> Monday  
Apr 14, 6:45 to 8:15 pm  
Carver Branch Library



**Eclectic Eats**  
Tuesday, Apr 15, 7 pm  
Russell's Bistro  
1601 W 38th Street, Austin  
[www.russlesbistro.com](http://www.russlesbistro.com)  
512) 467-7877  
Join us after you mail your taxes in. No special ethnic theme, just great food well prepared! Participants must provide their own transportation. RSVP to Aaron

Rabushka at 512/280-2807 or [arabushka@austin.rr.com](mailto:arabushka@austin.rr.com) by noon on Monday, April 14.

**Thank Goodness It's Thursday (TGIT-South)**  
3<sup>rd</sup> Thursday  
Apr 24, 6-8 pm  
Join us for conversation, food, and fun. Prospective members welcome.

**Seal & Label**  
Apr. 27, 8 Ppm  
Join the TGIT Group to help seal and label the newsletter.

-----  
**UPCOMING IN MAY**  
May 7, Games Night  
May 8 TGIT-N. Chess Night  
May 8 ALG, Calendar Due  
May 17, Board, Member Meetings  
May 15 TOIT-S  
May 22 TGIT-N, S&L  
May 23-26 Houston SynRO

## EVENT DIRECTIONS

**Board Meeting**  
Café Express  
3418 N Lamar Blvd,  
Austin, TX 78705, 512-452-9888  
We'll be in the room with a door.

**Member Meeting**  
Carver Branch Library  
Carver Public Library, Room 2,  
1161 Angelina, Austin 512-974-  
1010 Between 11th and 12th  
Streets, east of I-35. This location  
allows direct access to the library

from 183 and 130 via FM 969 MLK  
and 12th Street.

**TGIT-North, Chess Night,  
Seal & Label**  
Central Market Café North at  
Central Park 4001 N. Lamar Blvd.,  
Austin 512-206-1020. East of N.  
Lamar between 38<sup>th</sup> and 44<sup>th</sup>  
Streets; on the south side of the  
store. Look for the Mensa table  
sign—usually we're upstairs on the  
Mezzanine.

**TGIT-South**  
Central Market Café South at  
Westgate Mall: 4477 S. Lamar  
Blvd., Austin 512-899-4300 On the  
south side of the S. Lamar access  
road (the south access road of I-  
290/SR71) between Westgate  
Blvd. and Frontier Trail. Enter at  
the east side of the store by the  
statues of fruits and vegetables.

**POSTMASTER: Send address changes to:**

**AMERICAN MENSA LIMITED**  
1229 CORPORATE DR W  
ARLINGTON, TX 76006-6103

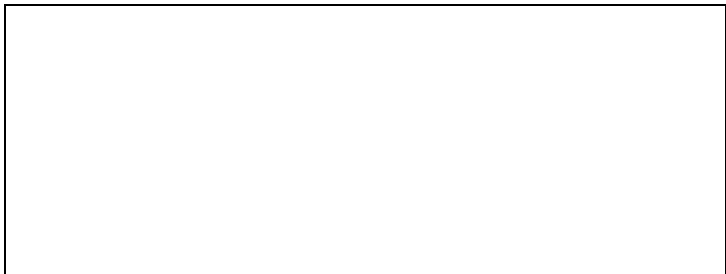
**PUBLICATION NOTICES**

**The Armadillo Literary Gazette** is owned by American Mensa Limited and is the monthly official publication of Lone Star Mensa.  
**Subscriptions** are included with Lone Star membership. Other Mensa members may subscribe for \$10 per year. Subscribers may request delivery by email, USPS mail, or both. Send subscription requests to the Publications Office, 3206 Twilight Trail, Austin, TX 78748-2608.  
**Submissions** of all types are encouraged. The deadline is the second Thursday of each month. Submissions may be by email (preferred) or by snail mail in typed format. Anonymous submissions are not accepted, although the author's identity may be withheld upon request. The editor reserves the right to edit for clarity and length. Items in this newsletter may be reprinted in other Mensa publications, with credit given, unless restricted by the author.  
**Calendar** inputs may be submitted at any time and will normally be published online within three days and in the next month's printed calendar if received before the cut-off date. The cut-off date is the second Thursday of the previous month.  
**Advertising** may be accepted subject to space limitations. Lone Star Mensa members may submit 2 non-commercial ads per year at no charge, limited to 4 column lines maximum. Publication dates are subject to editor's discretion. Business-card-sized ads (2" x 3") are \$10 for one month, \$25 for three months, and \$40 for six months. Rates for other sized ads or other time periods are available upon request. Ads must be camera-ready, accurately sized, and should be submitted via email in Microsoft Word (preferred, DOC or DOCX), JPG, or PDF format. The deadline for ad submissions to the newsletter editor is 5 days before the general newsletter deadline. Publication may be delayed due to space limitations and may be edited to meet publication standards.

Newsletter submissions may be sent to [editor@ism.us.mensa.org](mailto:editor@ism.us.mensa.org)

Calendar submissions may be sent to [calendar@ism.us.mensa.org](mailto:calendar@ism.us.mensa.org)

The editor's snail mail address is  
Rose Berkowitz  
10610 Morado Cir Apt 1302  
Austin, TX 78759-5555



# Armadillo Literary Gazette

## IN THIS ISSUE

Editor's Choice/Local Group Newsletters	1
President's Column	2
RVC Column	3
Board Minutes	4
Book Review/Movie Quotes	5
Quotes/Science News	6
Gifted Youth	7
Sudoku/Colloquium News	8
Leadership Summit/Poetry	9
Member News	10
Culture Quest®	11
Mind Games	12
Monthly Meeting Report/Humor	13
LSM Contacts	14
LSM Calendar	15
Postal Page/Table of Contents	16